

The Quarterly Magazine of the Associated Builders & Contractors New Hampshire/Vermont Chapter

CONSTRUCTION RESOURCE



Volume 34, Issue 4

2025 EXCELLENCE IN CONSTRUCTION AWARDS



Delivering safe, innovative approaches to managing high-risk, technically complex projects



The EnviroVantage role is to perform the initial environmental cleanup with attention to the overall considerations of the project. Having successfully completed thousands of projects, we believe in a “team” philosophy. EV understands that by partnering with owners, general contractors, and consultants we ensure our customers receive the most efficient, cost effective, and safest projects possible.



800-640-5323
www.EnviroVantage.com

Associated Builders and Contractors

CORE VALUES

ABC values economic freedom within a free-market economy, with open and fair competition and diverse participants constantly striving to achieve the highest levels of personal and company performance.

ABC values the highest levels of personal and corporate standards of behavior characterized by responsibility, accountability and integrity, with demonstrated personal and industry professionalism by all participants.

VISION

The Vision of ABC is an environment in which people and companies succeed based on free-enterprise principles within the free-market system.

MISSION

ABC will continually strive to be the leading voice promoting free enterprise within the construction industry. ABC will promote and defend the merit shop philosophy. This philosophy encourages open competition and a free-enterprise approach to construction based solely on merit, regardless of labor affiliation.

CORE PURPOSE

The Core Purpose of ABC is to advance and defend the principles of the merit shop in the construction industry and to provide members and their employees with an opportunity to succeed.



Contents

FROM THE CHAIR

Reflecting on an Incredible Year!7

EVENT

2025 Excellence in Construction
Award Gala October 23, 2025.....5

ABC NATIONAL NEWS

ABC Names 2026 National Chair,
Executive Committee8

ABC: Construction Materials Prices Continue
To Rise, Up 3.5% Since Last September9

First Technology in Construction Expo
Hosted by ABC NH/VT 14

EDUCATION

Future Leaders in Construction (FLiC) 2025–2026:
Building Skills, Confidence, and Community 12

MEMBERS IN THE NEWS 39

NEW MEMBERS 40

ADVERTISER INDEX 41

Associated Builders and Contractors, Inc. is a national non-profit organization whose mission is to represent the construction industry as a cohesive group of professionals, to serve as their vision and voice, and to pursue quality, common goals, and solutions to industry issues. Construction Resource is published quarterly by the NH/VT Chapter of Associated Builders and Contractors. Subscription rate is \$20 per year.

© 2025 Associated Builders and Contractors of New Hampshire & Vermont

The NH/VT chapter is located at:
58 Chenell Drive, Concord, NH
603-226-4789 | info@abcnhvt.org



@abcnhvt



@abcnhvt



@abcnhvt



@abcnhvt



Building The Next 40 Years, TOGETHER!

Your Needs, Our Cornerstone!

- Brickwork, Stonework, Granite, Blockwork, Restoration, Precast, & Rainscreens.

Safety First!

- EMR Rating of 0.71

Modern Operations, Experienced Crew!

- A team with over 476 years of experience combined (laborer to co-owners).

Build Tomorrow, Leave A Legacy!

Visit Our Website



Contact Us

833-286-0395

2025 Excellence in Construction Award Gala October 23, 2025



Chairman's Award

Industrial/Manufacturing Under \$20M

North Branch Construction SIG SAUER Newington Range & Range Tube Expansion



At **SIG SAUER**'s Newington campus, North Branch Construction delivered one of the most complex projects imaginable: a live-fire testing facility for the U.S. Army's Next Generation Squad Weapons. The centerpiece was the installation of a 328-foot-long steel firing tube, built in 30,000-pound sections and suspended 14 feet in the air over an active manufacturing floor. Aligning the tube—where the exit end landed within less than an inch of the building's primary power feed—demanded perfect precision on the first attempt. The project also expanded ground-level test ranges with six ballistic traps and three trap designs, each custom-engineered for specific weapons and usage scenarios. Every trap integrated seamlessly with new fire, alarm, and security systems, while ensuring testing could only occur under fully operational safety conditions. To hoist the massive tube sections into place, NBC fabricated a custom cradle and rigging system, rotating and setting each piece with exacting accuracy.

Through innovation, precision, and collaboration, North Branch delivered a mission-critical facility that now serves as a cornerstone of **SIG SAUER**'s next generation of defense technology





From the Chair

Reflecting on an Incredible Year!

As I sit down to write my final Chairman's Message for 2025, I can't help but feel a deep sense of gratitude and pride for what we've accomplished together as a chapter. This has been a landmark year—one filled with milestones, hard work, and celebrations that truly showcase the strength and spirit of our **ABC NH/VT** family.

First and foremost, I want to extend heartfelt congratulations to all the winners of our 2025 Excellence in Construction Awards, held on October 23 at the DoubleTree by Hilton in Manchester. This event remains my absolute favorite, where we come together to honor the outstanding craftsmanship, innovation, and dedication that define our merit shop industry. Watching the project videos, seeing the stunning photos, and hearing the stories of challenges overcome and triumphs achieved never fails to inspire me.

A special shout-out to **North Branch Construction** for earning the prestigious Chairman's Award—the "Best of the Best"—for their exceptional work on the Sig Sauer Newington Range & Range Tube Expansion. This project exemplified teamwork, quality, safety, and professionalism at the highest level. Congratulations also to all our Excellence Award recipients, including Charters Brothers Construction, DEW Construction, EnviroVantage, Fulcrum Associates, Jewett Construction, Methuen Construction, Metro Walls, NorthPoint Construction Management, PROCON, Pynn Masonry, ReArch Company, and many others who brought home honors for projects that will benefit our communities for

years to come. And to our Merit Award winners—your contributions are equally vital. Every submission represented the very best of what we do, and I'm proud of each and every one of you.

This year also marked our chapter's **40th anniversary**—four decades of advocating for open and fair competition, supporting merit shop principles, and building a stronger construction community in New Hampshire and Vermont. From those early days in 1985 with a handful of dedicated founders to where we stand today, ABC has been the unwavering voice ensuring projects are awarded to the most qualified and responsible bidders. We've continued that fight in the NH State Legislature, championing policies that promote fair and open competition while protecting our industry's future.

None of this would have been possible without the groundbreaking launch of the **Vermont Construction Academy** in Winooski. What started as a vision just a few years ago became reality with its grand opening in April, thanks to the tireless efforts of so many members, supporters, and our outstanding team led by chapter president Josh Reap. The academy is already training the next generation in carpentry and other essential trades, providing hands-on opportunities that will bring fresh talent into our workforce. It's a game-changer for our industry, addressing the needs we've all felt for years, and I'm thrilled to have been part of its journey.

As my term as 2025 Chapter Chair comes to a close, I want to thank you—all our members, staff, and partners—for the trust you've placed in me. Serving in this role during such a pivotal year has been an incredible honor. The relationships, shared knowledge, and camaraderie I've experienced have enriched me personally and professionally, just as they have for so many of us in ABC.

I look forward to continuing to support our chapter in the years ahead and can't wait to see what 2026 brings under the leadership of Greg Bariam. Thank you for an unforgettable year!

Very Truly Yours,

Gary Thomas

2025 ABC NH/VT Chairman
NorthPoint Construction Management, LLC
President / CEO



VOLUME 34, ISSUE 4

ABC NH/VT CHAPTER BOARD OF DIRECTORS

CHAIR

Gary Thomas,
NorthPoint Construction Mgmt, LLC

VICE CHAIR

Greg Bairam, Longchamps Electric, LLC

SECRETARY

Ron Ciotti, Hinckley Allen & Snyder, LLP

TREASURER

Kelli D'Amore,
Nathan Wechsler & Co., CPA

DIRECTORS

Tom Sullivan, Jr., Sullivan Construction
William Hickey, Turner Group
Jeff Comeau, Turnstone Corporation
Mike DiBacco, DECCO, Inc.
Daryl Luter, Fulcrum Associates, Inc.
Joel Pickering,
Denron Hall Plumbing & Heating
Kevin Thibodeau,
Hampshire Fire Protection, Co., LLC
Dale White, Lieghton A. White, Inc.

NATIONAL DIRECTORS

Matt Wheaton, DEW Construction
Eric Horner, Gallagher
Ron Ciotti, Hinckley Allen & Snyder, LLP
Alternate: Vacant

EX OFFICIO:

ABC Group Trust Administrator –
Ryan Foye, ABC Self Insured Group
ABC Young Professionals Group –
Cameron Riley, DEW Construction
ABC NH/VT 401K Administrator –
Jay Edwards, Granite Financial Partners

ABC NH/VT CHAPTER STAFF

PRESIDENT & CEO

Joshua P. Reap, josh@abcnhvt.org

DIRECTOR OF MEMBERSHIP

Jen Beach, jen@abcnhvt.org

OPERATIONS & EVENTS MANAGER

Lisha Nelson, lisha@abcnhvt.org

MANAGER OF EDUCATION & TRAINING

Stephanie Marx, steph@abcnhvt.org

VERMONT REGIONAL DIRECTOR

Matt Musgraves, matt@abcnhvt.org

VT CONSTRUCTION ACADEMY MANAGER & INSTRUCTOR

Ross Lavoie, ross@abcnhvt.org

DESIGN/PRODUCTION

www.speedyprintingnh.com

ABC Names 2026 National Chair, Executive Committee

WASHINGTON, Nov. 19—Associated Builders and Contractors announced today that Thomas “Murph” Murphy, vice president of Power & Construction Group, Scottsville, New York, was elected 2026 chair of the ABC National Board of Directors during its meeting at the association’s annual Leadership Institute in Marco Island, Florida.

“I am blessed and honored to serve ABC and its members in the role of 2026 national chair,” said Murphy. “Starting my construction career in the field and learning the importance of every position on a jobsite makes me appreciate how the merit shop gives everyone the opportunity to rise from laborer to industry leader. I am proud to work alongside the men and women of ABC who are engaged in growing our businesses, upskilling our workforces and fighting for free and open competition across America. In this role, I look forward to not only advancing ABC’s political advocacy to champion free enterprise, defend worker choice and support small business, but also to growing the prestigious Accredited Quality Contractor credential among elite members

for their commitment to corporate responsibility.”

“ABC is synonymous with merit in the construction industry, and the contractors who lead our association embody what merit means by building better communities, investing in their workers and delivering projects that raise the bar for quality, safety and integrity,” said Michael Bellaman, ABC president and CEO. “Congratulations to Murph, Chair-Elect Brandon Mabile, Secretary Lorri Grayson and every member of the 2026 Executive Committee for being chosen to build a stronger future for ABC, its members and its chapters.”

The members of ABC’s 2026 Executive Committee, who will take office on Jan. 1, 2026, are:



- **Chair of the ABC Board of Directors:** Thomas “Murph” Murphy, vice president, Power & Construction Group, Scottsville, New York
- **Chair-elect:** Brandon Mabile, corporate business development director, Performance Contractors Inc., Baton Rouge, Louisiana
- **Secretary and Mid-Atlantic region vice chair:** Lorri Grayson, partner and founder, GGA Construction, Middletown, Delaware
- **Treasurer:** Kenneth Gardiner, CPA, CCIFP, partner, Dannible & McKee, LLP, Syracuse, New York
- **Immediate past chair:** David Pugh, partner, Bradley LLP, Birmingham, Alabama
- **Mid-America region vice chair:** Ryan Odendahl, president and CEO, Kwest Group, Perrysburg, Ohio
- **Midwest region vice chair:** Jessica Cannizzaro, president and master plumber, Milestone Plumbing Inc., Wauwatosa, Wisconsin
- **Mountain West region vice chair:** Steve Grauer, regional vice president, Southwest Region of Hensel Phelps Construction, Phoenix
- **Northeast region vice chair:** Michael Bennett, senior executive vice president, CIANBRO, Pittsfield, Maine
- **Pacific region vice chair:** Greg Gutierrez, president and CEO, Truitt Corp., Bakersfield, California
- **South Central region vice chair:** Christopher Martinez, president and CEO, Central Electric, San Antonio
- **Southeast region vice chair:** Kerrick Whisenant, president, Limestone Building Group LLC, Hartselle, Alabama
- **Chapter presidents’ liaison:** Shandon Harbour, president and CEO, ABC San Diego chapter
- **ABC national president and CEO:** Michael Bellaman

Celebrating its 75th anniversary in 2025, Associated Builders and Contractors is a national construction industry trade association established in 1950 with 67 chapters and more than 23,000 members. Founded on the merit shop philosophy, ABC helps members develop people, win work and deliver that work safely, ethically and profitably for the betterment of the communities in which ABC and its members work. Visit us at abc.org.

ABC: Construction Materials Prices Continue To Rise, Up 3.5% Since Last September

WASHINGTON, Nov. 25—Construction input prices increased 0.2% in September compared to the previous month, according to an Associated Builders and Contractors analysis of U.S. Bureau of Labor Statistics' Producer Price Index data released today. Nonresidential construction input prices also increased 0.2% for the month.

■ Overall construction input prices were 3.5% higher than in September 2024, while nonresidential construction input prices were 3.8% higher. Prices decreased in all three energy categories in September. Natural gas and unprocessed energy materials prices were down 8.7% and 3.0%, respectively, while crude petroleum prices were down 1.7% in September.

■ “Construction input prices rose for the fifth straight month in September,” said ABC Chief Economist Anirban Basu. “While that represents the longest streak of monthly increases since the first half of 2022, those increases are relatively modest. Materials prices have risen at a 3.2% annualized rate since April, a rate that is faster than ideal but nowhere near the escalation that occurred in 2021 and 2022.

■ “Unfortunately, it’s unclear how higher tariffs on key materials like iron and steel and aluminum and copper will affect prices over the next several months, and it’s noteworthy that commodities related to those materials have exhibited significant year-over-year price increases,” said Basu. “Despite the prospect of ongoing materials price escalation, contractors remain cautiously upbeat about their profit margins and sales over the next six months, according to ABC’s Construction Confidence Index.”

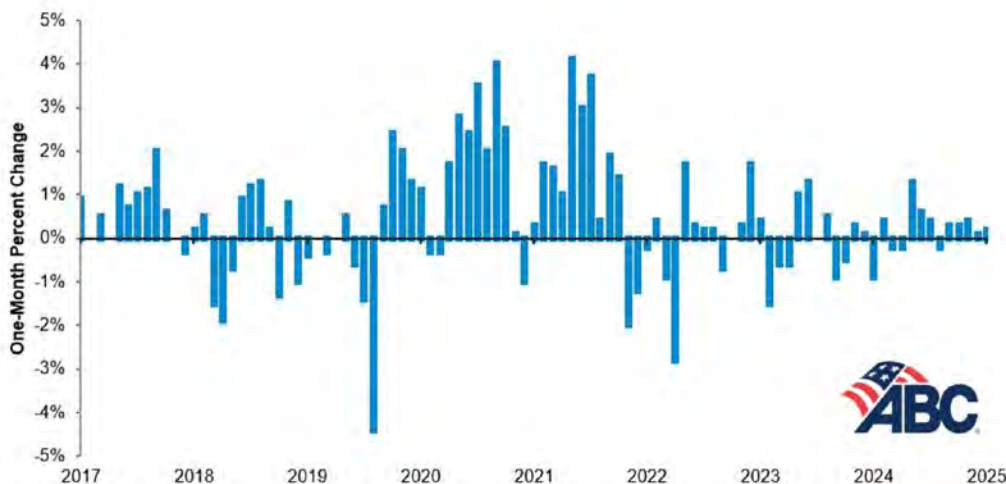
Producer Price Index September 2025



	1-Month % Change	12-Month % Change	Change Since Feb 2020
Inputs To Industries			
Inputs to construction	0.2%	3.5%	43.3%
Inputs to multifamily construction	0.1%	3.3%	43.5%
Inputs to nonresidential construction	0.2%	3.8%	44.2%
Inputs to commercial construction	0.2%	4.4%	46.1%
Inputs to healthcare construction	0.3%	4.4%	45.7%
Inputs to industrial construction	0.3%	4.4%	41.9%
Inputs to other nonresidential construction	0.2%	3.7%	43.7%
Inputs to maintenance and repair construction	0.1%	3.2%	41.0%
Commodities			
Adhesives and sealants	0.6%	3.0%	39.9%
Brick and structural clay tile	0.0%	1.6%	33.1%
Concrete products	0.3%	2.0%	42.2%
Construction machinery and equipment	0.3%	4.4%	35.6%
Construction sand, gravel, and crushed stone	0.6%	6.1%	48.4%
Copper wire and cable	-4.3%	9.1%	54.0%
Crude petroleum	-1.7%	-4.5%	30.6%
Fabricated structural metal products	0.6%	6.7%	62.2%
Gypsum products	0.0%	0.7%	48.7%
Hot rolled steel bars, plates, and structural shapes	0.8%	2.9%	44.8%
Insulation materials	-0.1%	-0.5%	46.0%
Iron and steel	-1.0%	9.0%	52.0%
Lumber and wood products	-0.6%	0.9%	25.6%
Natural gas	-8.7%	25.1%	31.2%
Plumbing fixtures and fittings	0.3%	6.9%	28.0%
Prepared asphalt, tar roofing and siding products	-0.2%	3.4%	47.2%
Softwood lumber	-4.2%	-1.4%	10.0%
Steel mill products	-1.5%	12.4%	62.5%
Switchgear, switchboard, industrial controls equipment	0.1%	10.3%	62.8%
Unprocessed energy materials	-3.0%	0.7%	45.6%

Source: U.S. Bureau of Labor Statistics, Associated Builders and Contractors

Producer Price Index Monthly Percent Change Inputs to Construction Industries September 2017 Through September 2025



Source: U.S. Bureau of Labor Statistics, Associated Builders and Contractors

Visit abc.org/economics for the Construction Backlog Indicator and Construction Confidence Index, plus analysis of spending, employment, job openings and the Producer Price Index.

Celebrating its 75th anniversary in 2025, Associated Builders and Contractors is a national construction industry trade association established in 1950 with 67 chapters and more than 23,000 members. Founded on the merit shop philosophy, ABC helps members develop people, win work and deliver that work safely, ethically and profitably for the betterment of the communities in which ABC and its members work. Visit us at abc.org.

Excellence Award

Commercial Over \$10 Million

ReArch Company Adimab Biotech Expansion



In Lebanon, New Hampshire, Adimab—an international leader in antibody discovery—expanded its headquarters with a visionary new facility that redefines what a laboratory can be. Designed by Christopher Smith and Sylvia Richards and built by ReArch Construction, the three-story, 27,800-square-foot addition showcases the beauty and performance of mass timber construction, while supporting cutting-edge science in a tranquil, forested setting. Inside, open labs and collaborative spaces are framed by glulam beams and CLT panels, creating clean, efficient spans and biophilic warmth that enhance productivity. Sustainability is woven throughout: denim insulation, automated lighting, a high-efficiency HVAC system, and locally harvested cedar siding reduce environmental impact while connecting the building to its landscape.

ReArch overcame the challenges of building within an active laboratory, sequencing complex mechanical transitions with zero disruption to ongoing research. Through precision, collaboration, and innovative problem-solving, the Adimab Headquarters Expansion now stands as a model of scientific excellence, sustainable design, and construction leadership.



Excellence Award

Institutional

DEW Construction

Bow Elementary School Renovations & Addition



In Bow, New Hampshire, a growing community called for a school that could grow with it. The Bow Elementary School Expansion and Renovation answered that call—delivered by DEW Construction with The Turner Group leading design. The project added a new 12,580-square-foot wing with eight bright, modern classrooms, a new elevator, and vital life-safety systems, while more than 56,000 square feet of existing space was renovated. Upgrades included secure entry, redesigned offices, modernized fire protection, improved acoustics, updated bathrooms, new flooring, and refreshed community spaces—all designed to enhance safety, functionality, and learning. Construction took place in an occupied school, requiring careful phasing and innovative scheduling. DEW turned that challenge into opportunity, engaging students with site tours, lessons, and even topping-off ceremonies where students signed the final beam.

Delivered ahead of schedule and under budget, the Bow Elementary project reflects true collaboration between builders, educators, and the community—creating a safe, inspiring space where learning will thrive for generations.



Future Leaders in Construction (FLiC) 2025–2026: Building Skills, Confidence, and Community

As the Future Leaders in Construction (FLiC) 2025–2026 cohort enters its third month this December, students across all three classes are already making meaningful progress in their leadership development journey. The program, designed to cultivate leadership skills within the next generation of construction professionals, has introduced participants to a wide range of activities that encourage self-reflection, teamwork, and personal growth.

Early in the semester, students completed the DISC assessment, giving them valuable insight into their individual communication styles, behavioral tendencies, and natural strengths. With this foundation, classes explored the essential traits that define strong, effective leaders in both the construction industry and the broader professional world.

Hands-on activities have played a major role in shaping this understanding. One highlight involved using LEGO bricks to demonstrate real-world leadership scenarios—an engaging exercise that allowed students to model collaboration, problem-solving, and clear communication. Through these activities, students not only recognized what good leadership looks like but also experienced it firsthand.

In addition, the cohort has begun its introduction to The 7 Habits of Highly Effective People, using the framework to reflect on personal responsibility, goal-setting, and the habits that contribute to long-term success. Step by step, students are discovering how these principles apply to their own lives, both inside and outside the classroom.

As the months progress, a noticeable transformation is taking place. Students of all abilities are beginning to recognize their own leadership qualities, as well as the areas where they can continue to grow. They are facing challenges with increasing confidence, tackling uncomfortable tasks, and learning the value of supporting one another as a unified team.

The FLiC program continues to build not just future construction leaders, but resilient, reflective individuals equipped to thrive in any environment.



As a participant in the Future Leaders in Construction course, I have found it to be extremely valuable for my professional development as a leader. The program has emphasized the importance of self-awareness, which I now recognize as a critical component of effective leadership. While I have held managerial roles in a completely different field before, this course has allowed me to revisit familiar leadership principles and strengthen them. More importantly, it has helped me reinforce and reinvent my leadership skill set to better align with the demands of the construction industry.

Rob Frye — Lead Estimator Peter Desalvo Contracting



Tech**n**ology in **Con**struction **2026**

January 15, 2026 | 7:30 am - 3:00 pm
Grappone Conference Center, Concord, NH

Register Today!
www.abcnhvt.org/calendar



Keynote Speaker

Ajoy Bhattacharya, Microsoft Director, Technology Strategist
Revolutionizing AEC with Microsoft's Technological Edge

Guest Speakers

Patrick Scarpatti, ABC National Director of Construction Technology and Innovation
Nicholas Tilford, Senior Educator, Procore Technologies
Technology in Education/Workforce Development

Professional Panel Discussion

Practical Applications of AI across the Construction Field

Presentations and Exhibits by:

EGNYTE



ServiceTitan®

**Automated
Logic**

 **LUMBER**



*Please note: this is not a completed list of presenters and exhibitors.
We are adding to the line-up daily. Stay tuned for more information.*

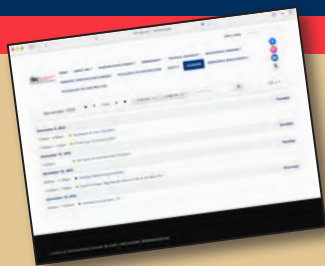
First Technology in Construction Expo Hosted by ABC NH/VT

The construction industry is evolving at a pace unlike anything we've seen before, and the Associated Builders and Contractors NH/VT is stepping forward with an exciting new event designed to help contractors, leaders, and innovators stay ahead of the curve. The inaugural Technology in Construction Expo will bring together forward-thinking professionals, solution providers, and industry experts for a day of learning, connection, and hands-on discovery.

A highlight of the event is the keynote presentation from **Ajoy Bhattacharya of Microsoft**, a recognized leader in digital transformation and the future of work. Bhattacharya will offer insight into how artificial intelligence, cloud solutions, and emerging technologies are reshaping construction workflows—from project planning and safety management to workforce development and productivity. His perspective will help attendees understand not only what's coming next but how to begin adopting these tools today to gain a competitive advantage.

In addition to the keynote, the Expo features a dynamic mix of exhibitors showcasing cutting-edge tools, software, and equipment designed to streamline operations, improve collaboration, and enhance jobsite efficiency. Attendees will have the opportunity to see demonstrations firsthand, ask questions directly to technology providers, and explore solutions tailored to construction needs. Whether you're a contractor looking to modernize your processes, a business leader planning for the future, or a professional eager to keep up with industry innovations, the Technology in Construction Expo is an opportunity you won't want to miss. Join ABC NH/VT for a day that promises fresh ideas, meaningful conversations, and practical takeaways to help your company thrive in the next era of construction.

Register today at
www.abcnhvt.org/calendar.



Innovation Powered by Our Sponsors



Excellence Award

Specialty Construction - Commercial over \$1 M

EnviroVantage, Inc.

**Burlington High School Abatement,
Demolition and Remediation Project**



At Burlington High School, Envirovantage faced one of Vermont's most complex abatement and demolition projects—removing hazardous materials while preparing the site for a new campus. Contamination levels exceeded state thresholds, requiring careful management of 11 separate waste streams under Vermont's stringent environmental regulations. With an accelerated schedule and intense public attention, EnviroVantage coordinated demolition and remediation alongside new construction, at times managing 45 crew members and moving dozens of truckloads of waste daily. Safety was paramount: remote-operated equipment reduced worker exposure, and specialized demolition techniques kept materials contained within building footprints to prevent cross-contamination. Innovation defined the project. A proprietary Hydroblaster system enabled safe removal of PC Band asbestos mastics without chemicals, while a coordinated stormwater plan protected Lake Champlain and surrounding soils.

Through precision, planning, and environmental stewardship, EnviroVantage delivered a safe, efficient cleanup—transforming a contaminated site into a foundation for Burlington's educational future.



Excellence Award

Exteriors

Metro Walls Cambrian Rise



On the shores of Lake Champlain, Metro Walls played a central role in bringing the **Cambrian Rise Apartments** to life—a seven-story, 40,000-square-foot luxury complex that sets a new standard for Burlington waterfront living. Working just yards from the lake, the team faced relentless winds, fluctuating weather, and the constant threat of moisture. To protect progress, crews braced structures, secured materials, and used advanced Denselament sheathing to create a durable, weather-tight envelope. Temporary heating allowed safe winter work, while humid summers demanded equal resilience. Inside, Metro Walls delivered craftsmanship that elevated every space—from intricate framing and detailed drywall to elegant fireplaces and penthouse-style units designed to showcase lakefront views. With manpower ranging from 30 to 80 crew members at a time, safety was paramount. Daily meetings, training, and proactive oversight kept performance consistent throughout the nearly two-year build.

Through skill, adaptability, and teamwork, Metro Walls helped transform **Cambrian Rise** into a landmark community and a lasting symbol of Burlington's lakefront revival.



Merit Award

Specialty Construction-Commercial Over \$1M

Pynn Masonry, Inc. DHMC Patient Tower



In Lebanon, New Hampshire, the **Dartmouth-Hitchcock Medical Center Patient Tower** represents a landmark achievement in healthcare construction. This 212,000-square-foot addition expands critical care capacity with new patient rooms, surgical suites, and advanced support spaces—the first major campus expansion since 1991. Pynn Masonry and the project team delivered with precision under a Construction Management at Risk model. Quality was ensured through digital coordination tools, pre-installation conferences, and drone monitoring. Value engineering optimized materials and methods, while early procurement minimized delays. Innovation and safety went hand in hand. The use of Beta Max Portable Hoist Systems improved efficiency while reducing the risk of injury. And through a merit-based approach, the project created opportunities for qualified subcontractors and suppliers—broadening the talent pool and fostering a performance-driven environment.

Completed in 2023 with over 5,000 man-hours and zero incidents, the **Patient Tower** now stands as a state-of-the-art facility that supports world-class care and a healthier future for the community



Merit Award

Commercial Under \$10 Million

Sullivan Construction, LLC. Dover Medical Office Building



In Dover, New Hampshire, Sullivan Construction partnered with Market Square Architects to deliver a striking new three-story, 44,000-square-foot medical office building for Summit Land Development. Built on a challenging sloped site, the facility redefines healthcare space in the Seacoast region. Design and performance go hand in hand. A dynamic mix of aluminum panels, expansive glazing, and a 580-square-foot overhang create a modern profile, while durable systems—steel framing, EPDM roofing, cultured stone veneer, and a life-safety generator—ensure resilience for years to come. The team overcame formidable ledge, harsh winter weather, mid-project infrastructure changes, and supply chain delays with precision and grit. Through controlled blasting, real-time design pivots, and proactive procurement, Sullivan Construction kept the project on budget and fully ready for tenant fit-out.

Delivered with a culture of collaboration, craftsmanship, and safety—zero lost-time accidents and a .91 MOD rate—the **Dover Medical Office Building** stands as both a healthcare cornerstone and a testament to design-build excellence.



Excellence Award

Institutional

North Branch Construction Easterseals NH Gammon Academy



At the **Easterseals Gammon Academy**, North Branch Construction delivered a benchmark project in collaboration, value-driven design, and adaptive construction. Built within an active campus serving students with complex behavioral needs, the work required technical skill, environmental sensitivity, and an unwavering focus on safety and certainty. Value engineering was central. The team partnered with the owner to identify alternatives that maintained quality while delivering critical savings—more than \$4 million in total. One key solution was replacing specified wallcoverings with a proprietary plaster wall finish that proved superior in durability, saving \$1 million alone. Further savings came through mechanical system reengineering, scope-specific subcontractor input, and reselecting the access control system for compatibility across all Easterseals facilities. Timely completion was also critical. To secure GOFERR funding, occupancy had to be achieved by December 31, 2024.

Using CMiC construction management software, the team synchronized field crews, design teams, and the owner in real time, navigating supply chain and scheduling challenges to deliver on schedule. The result is a facility tailored to the Academy's mission.



Merit Award

Specialty Construction - Commercial Under \$1M

Steel Elements International F.W. Webb Swanzezy



At the new **F.W. Webb Warehouse and Showroom** in Swanzezy, Steel Elements International delivered the framing and drywall scope for a 58,000-square-foot facility—four times the size of Webb’s previous location. The team’s expertise was tested from the start. High winds delayed the purlin roof installation, pushing schedules back by weeks. When structural drawings proved overbuilt, Steel Elements collaborated with engineers to revise the design, creating a more efficient system that became the prototype for Webb’s future locations. Inside the soaring showroom, crews tackled the challenge of installing a cloud ceiling 14 feet below a 34-foot roofline. Using Unistrut framing, threaded rods, and mast lifts, they worked safely around other trades to achieve the high-end design. Precise planning was essential as materials were delivered just once a week.

Through skill, adaptability, and teamwork, Steel Elements International played a key role in turning this ambitious \$10 million project into a modern facility that expands F.W. Webb’s reach across the region.

Excellence Award

Specialty Construction - Commercial Under \$1M

Pynn Masonry, Inc.

Residences at Hadley Falls



The **Residences at Hadley Falls** showcase how innovation, safety, and collaboration can transform a challenging site into a vibrant residential community. Built under a lump-sum contract, the project delivered 99 units and 60 parking spaces on a 6.4-acre flood-prone property—overcoming steep grades, weather, and floodplain constraints. Technology was central to success. Cloud-based collaboration tools, real-time scheduling software, and mobile field apps improved coordination, transparency, and productivity. Lean construction practices, modular assembly, and Hilti's fleet management system minimized waste and kept crews efficient. Value engineering drove smart decisions, from alternative foundations that reduced excavation costs to material substitutions that enhanced performance and sustainability. Despite severe weather and shifting scope, the team adjusted sequencing, used temporary drainage systems, and maintained momentum.

With thousands of man-hours worked without a single incident, the project was completed ahead of schedule and under budget. The **Residences at Hadley Falls** stand as a high-performing, resilient community—an achievement that reflects the best of safety, innovation, and construction excellence.

Excellence Award

Commercial over \$10 Million

Jewett Construction Hoffman Porsche



The new **Hoffman Porsche** dealership in East Hartford marks a milestone: the first Generation 5 Porsche facility in New England and only the fourth in the U.S.. Delivered by Jewett Construction in partnership with Hoffman Auto Group, this flagship was designed and built to Porsche's most advanced standards. The project demanded precision at every step. Subsurface conditions required 400 rammed aggregate piers and lightweight fill sourced from Florida. On a tight, multi-tier site, Jewett engineered grading solutions and stormwater systems to manage persistent flooding rains. Inside and out, Porsche's brand features came to life — 27-foot showroom ceilings, curved ACM and glass façades, wood slat ceilings, and column free service bays.

Success came through strong partnerships. Jewett worked hand in hand with ABC-member subcontractors, whose craftsmanship on structural steel, glazing, millwork, and MEP systems exemplified the merit philosophy— building with skill, integrity, and opportunity. Delivered on schedule, with zero incidents and no operational interruptions, the East Hartford Gen5 facility now stands as a showcase of construction excellence and Porsche performance.



Excellence Award

Design/Build

NorthPoint Construction Management, LLC. Hudson Police Department Building Expansion



NorthPoint Construction Management delivered a vital expansion for the **Hudson Police Department**—an addition and major renovation totaling more than 15,000 square feet, designed to serve the community for decades to come. The project upgraded a facility that was undersized and outdated, adding a new crime lab, expanded forensics areas, secure ADA-compliant entry, and improved male and female locker rooms. Sixteen covered carports with direct building access now protect cruisers year-round and provide charging stations—shaving minutes off emergency response during storms. Construction took place in a fully operational police station, requiring precise phasing, constant coordination, and strict security around sensitive areas like the armory, narcotics, and evidence rooms. NorthPoint kept the facility running 24/7 through daily communication, adaptive scheduling, and careful logistics.

Delivered ahead of schedule and under budget, the **Hudson Police Department** project reflects NorthPoint's commitment to collaboration, innovation, and community service—ensuring officers have a modern, secure home base to protect and serve for years to come.

Excellence Award

Commercial Under \$10 Million

Charters Brothers Construction Hyla Brook Estate



Next to the historic Robert Frost Farm in Derry, New Hampshire, Charters Brothers Construction brought **Hyla Brook Estate** to life—a purpose-built wedding and event venue that blends New England charm with modern performance. The vision was to evoke the warmth of a post-and-beam barn while meeting today's hospitality demands. The event hall's soaring exposed wood trusses deliver that timeless character, while also concealing lighting, sprinklers, and MEP systems with precision. A two-sided stone fireplace, custom millwork, and refined finishes add to the sense of craftsmanship and comfort. Building on raw land came with challenges: ledge removal during excavation, winter construction requiring enclosures and heat, and complex sequencing to integrate high-end finishes in exposed spaces. Charters Brothers managed each phase carefully, ensuring deadlines were met for the 2024 wedding season.

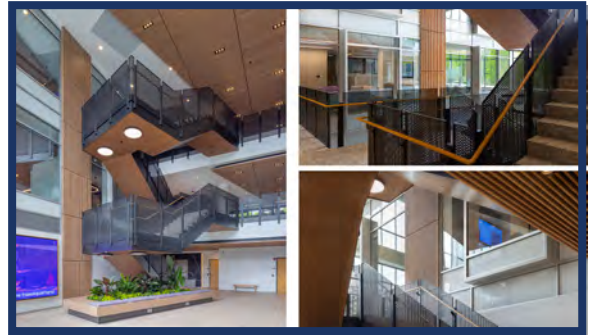
Now a sought-after destination for weddings, corporate events, and retreats, Hyla Brook Estate has been celebrated for its architecture and atmosphere—standing as both a cultural tribute and a lasting investment in the region.



Excellence Award

Commercial Over \$10 Million

PROCON Lighthouse Credit Union



PROCON's transformation of a 100,000-square-foot office building in Dover into **Lighthouse Credit Union's** new headquarters reimaged a vacant, compartmentalized structure as a vibrant, light-filled workplace designed to foster collaboration, health, and community. The centerpiece is a new three-story atrium—created by removing structural columns and slabs and replacing them with a custom steel system. This vertical hub connects every level and anchors key program areas: offices, conference rooms, fitness spaces, and a café. A dramatic feature stair and glass walls bring openness, daylight, and movement throughout the building. Innovation drove every phase. PROCON deployed in-house LiDAR scanning to generate a detailed 3D model of existing conditions, helping the team identify issues early, map complex systems, and redesign piping to increase ceiling heights. The result: time savings, cost reductions, and a smoother renovation process.

This project exemplifies transformation through innovation—delivering a dynamic new headquarters and a bold new future for **Lighthouse Credit Union**.

GENERAL CONTRACTOR

Andrews Construction Co., Inc.
PO Box 720
Campton, NH 03223
(603) 726-7623
www.andrewsconst.com

Bonnette, Page & Stone Corp.
51 Church St
Laconia, NH 03246
(603) 524-3411
www.bpsnh.com

Callahan Construction Managers
80 First Street
Bridgewater, MA 02324
(508) 279-0012
www.callahan-inc.com

Carrigg Commercial Builders LLC
454 Sheffield Rd
Manchester, NH 03103
(603) 262-4343
www.carrigg.com

C.E. Floyd Company, PBC
200 Baker Avenue, Ste 205
Concord, MA 01742
(781) 271-9006
www.cefloyd.com

Charters Brothers Const, LLC
27 Main St
Danville, NH 03819-3214
(603) 382-0279
www.chartersbrothers.com

Chinburg Properties
3 Penstock Way
Newmarket, NH 03857
(603) 868-5995
www.chinburg.com

CIANBRO
PO Box 1000
Pittsfield, ME 04967
(207) 487-3311
www.cianbro.com

CMGC Building Corp.
360 Harvey Rd
Manchester, NH 03103
(603) 629-9992
www.cmgcbuildingcorp.com

Cobb Hill Construction, Inc.
206 North State St
Concord, NH 03301
(603) 224-8373
www.cobhill.com

Consigli Construction
72 Sumner St
Milford, MA 01757
(508) 473-2580
www.consigli.com

Construx, Inc.
630 Daniel Webster Hwy, #1
Plymouth, NH 03264
(603) 536-3533
www.construxinc.com

Cormack Construction Management
46 East Madison Rd
Madison, NH 03849-5830
(603) 367-8272
www.CormackConstructionManagement.com

DECCO, Inc.
1900 Southwood Dr
Nashua, NH 03063
(603) 673-2200
www.decco.com

DEW Construction
150 Dow St, Ste 441
Manchester, NH 03101
(603) 352-3070
dewconstruction.com

Eckman Construction Co., Inc.
84 Palomino Lane
Bedford, NH 03110
(603) 623-1713
Eckmanconstruction.com

Engelberth Construction, Inc.
150 Water Tower Circle, 101
Colchester, VT 05446
(802) 655-0100
www.engelberth.com

Farrington Construction
4788 Spear Street
Shelburne, VT 05482
(802) 985-8669

Fulcrum Associates, LLC
5 Tech Circle
Amherst, NH 03031
(603) 673-3200
www.fulcrum-nh.com

H.P. Cummings Const Co
PO Box 269
Woodsville, NH 03785
(603) 747-3303
www.hpcummings.com

Harbor & Hearth
60 Route 103
Sunapee, NH 03782
(603) 526-2436
https://relaxandcompany.com/

Hollis Construction Management
237 Morrill St
Gilford, NH 03249
(857) 400-1028
www.holliscsm.com

Housewright Construction, Inc.
5365 Main St S.
Newbury, VT 05051
(802) 866-5520
www.housewright.net

Jewett Construction Co., Inc.
25 Spaulding Rd, Ste 17-2
Fremont, NH 03044
(603) 895-2412
www.jewettconstruction.com

Kingsbury Companies, LLC
58 Center Rd
Montpelier, VT 05602
(802) 496-2205
www.kingsburyco.com

Landry/French Construction
160 Pleasant Hill Rd
Scarborough, ME 04074
(207) 730-5566
landryfrenchconstruction.com

Lewis Builders Development, Inc.
54 Sawyer Ave.
Atkinson, NH 03811
(603) 362-5333
www.lewisbuilders.com

Meridian Construction Corp
32 Artisan Court # 4
Gilford, NH 03249
(603) 527-0101
www.meridiannh.com

Methuen Construction Co., Inc.
PO Box 980
Plaistow, NH 03865
(603) 328-2222
www.methuenconstruction.com

Morin Contracting Services, Inc.
711 Riverwood Dr
Pembroke, NH 03275
(603) 223-4127
www.morincontractingservices.com

MRP Construction and Restoration
134D Hall Street
Concord, NH 03301
(603) 223-4002
www.mrp-construction.com

North & South Construction Services
19 Nimble Hill Rd, Unit 2
Newington, NH 03801
(603) 610-1784
www.northsouthnh.com

North Branch Construction
76 Old Turnpike Rd
Concord, NH 03301
(603) 224-3233
www.northbranch.net

NorthPoint Construction Management, LLC
22 Hampshire Dr
Hudson, NH 03051-4922
(603) 546-2000
www.northpointcm.com

Optiline Enterprises, LLC
131 Burke St Unit A,
Nashua, NH 03060
(603) 402-1446
www.optiline.com

Optimum Construction, Inc.
91 Auburn St, Ste 1030
Portland, ME 04103
(207) 808-8269
www.optimumconstruction.com

PC Construction
193 Tilley Dr
South Burlington, VT 05403
(802) 658-4100
www.pcconstruction.com

PROCON
PO Box 4430
Hooksett, NH 03106
(603) 623-8811
www.proconinc.com

R.H. White Construction Co., Inc.
615 River Rd
Bow, NH 03304
(603) 424-3130
www.rhwhite.com

R.M. Piper, Inc.
PO Box 490
Plymouth, NH 03264
(603) 536-4135
www.rmppier.com

Realty Management Partners, LLC
8025 S. Willow St, Ste 211
Manchester, NH 03053
(603) 432-8778

ReArch Company Inc
88 Technology Park Way Ste 2
South Burlington, VT 05403
(802) 863-8727
www.RearchCompany.com

Riess Construction LLC
11 Lovejoy Rd
Plymouth, NH 03264
(603) 536-7756
www.riessconstruction.com

Sargent Corporation
3 Godfrey Dr
Orono, ME 04473
(207) 827-4435
https://sargent.us/

Structural Associates, Inc.
5903 Fisher Rd
East Syracuse, NY 13057
(315) 463-0001
www.structuralassociates.com

Sullivan Construction, LLC
258 South River Rd
Bedford, NH 03110
(603) 647-1777
www.sullivanconstruction.com

Swan Contracting, LLC
PO Box 420
Peterborough, NH 03458
(603) 371-2261
www.swan2b.com

Timberline Construction Corporation
300 Pine St
Canton, MA 02021
(339) 502-5000
www.timberlineconstruction.com/

Turnstone Corporation
479 Nashua St
Milford, NH 03055
(603) 249-9300
www.turnstonecorp.com

W.M. Schultz Construction
PO Box 2620
Ballston Spa, NY 12020
(518) 885-0060
www.wmschultz.com

Waterline Industries Corp.
7 London Lane
Seabrook, NH 03874-4328
(603) 474-7477
www.waterlineind.com

CONCRETE & MASONRY

AA & D Masonry, LLC
908 Hanover St. # 5
Manchester, NH 03104-5418
(603) 669-0083

Associated Concrete Coatings, LLC
476 Valley St
Manchester, NH 03103
(603) 669-2780
www.concoat.com

Carroll Concrete Co. Inc.
PO Box 1000
Newport, NH 03773
(603) 863-1000
www.carrollconcrete.com

Fifth Gen Masonry & Concrete, LLC
24 Townsend Rd
Mason, NH 03048
(978) 868-5436
www.fifthgenmason.com

George W. Pynn Masonry
29 Newton Rd. - Rte. 108
Plaistow, NH 03865
(603) 382-8969
www.pynnasonry.com

GS Bolton
61 Airport Dr Unit 4
Rochester, NH 03867
(603) 330-0055

JG MacLellan Concrete Co., Inc.
180 Phoenix Ave
Lowell, MA 01852
(978) 388-6102
https://www.jgmaclellanconcrete.com/

Mas-Con Corporation
29 Center St
Laconia, NH 03246
(603) 528-4880
www.mas-concorp.com

Masonry Arts NH, LLC
319 Dale St
Wilton, NH 03086
(603) 296-4933

Northern Design Precast, Inc.
51 International Drive
Loudon, NH 03307
(603) 783-8989
www.ndprecast.com

Premier Concrete Construction LLC
614 Gibbons Highway
Wilton, NH 03086
(603) 654-2471
www.premierconcretetellc.com

RediMix Companies, Inc.
1 Sundial Ave # 310
Manchester, NH 03103
(800) 269-6500
www.redimixcompanies.com

S.D. Szetela Masonry
PO Box 222
Glen, NH 03838
(603) 383-9740
www.sdszetela.com

VR Concrete, LLC.
PO Box 247
Colebrook, NH 03576
(603) 237-5000
www.vrconcrete.com

ELECTRICAL & CONTROLS

Advanced Power and Controls, LLC.
5 East Point Dr #16
Hooksett, NH 03106
(603) 722-9242
www.advancedpowercontrols.com

AES Electrical Contractors
29 Reservoir Hts
Plymouth, NH 03264
(603) 744-6738

CFW Electric, LLC
PO Box 142
Danville, VT 05828
(802) 684-2157
www.cfwelectric.com

Charron | Reflex Lighting North
PO Box 4550
Manchester, NH 03108
(603) 624-4827
www.charroninc.com

Cole Electric, Inc.
205 Church Lane
East Thetford, VT 05043
(802) 785-4818
www.coleelectric.com

Consolidated Electrical Distributors
79 Carl Dr
Manchester, NH 03103
(603) 669-6427
www.cedmanchester.com

Custom Electric & Communications, LLC
407 Daniel Webster Hwy.
Merrimack, NH 03054
(603) 424-7557
www.CustomElectricNH.com

Daniels Electric Corporation
PO Box 7412
Gilford, NH 03247
(603) 293-4707
www.danielselectriccorp.com

Dependable Controls Services LLC
PO Box 307
Seabrook, NH 03874
(603) 580-5744
www.dependablecontrolsservices.com

Econ Electrical Contractors, Inc.
17 Franklin Street
Warrent, RI 02885
401-297-1844
www.econelectrical.net

Electric Supply Center
25 Sundial Ave #405W
Manchester, NH 03103
(781) 272-7700

Ewing Electrical Co., Inc.
PO Box 370
Deerfield, NH 03037
(603) 463-8852

F.H. Hamblet, LLC
29 Victoria St.
Keene, NH 03431
(603) 352-2330
www.hambletelectric.com

Gate City Electric, LLC
PO Box 3554
Nashua, NH 03061
(603) 886-0200
www.gatecityelectric.com

Graybar Electric Co., Inc.
80 Pepsi Rd
Manchester, NH 03109
(603) 206-7900
www.graybar.com

Harry-O Electrical Corporation
PO Box 67
Pittsfield, NH 03263
(603) 798-5599
www.harryoelectrical.com

Independent Electric Supply
177 Gay St
Manchester, NH 03103
(603) 627-2220
www.iesbuy.com

Interstate Electrical Services Corporation
15 Cote Lane
Bedford, NH 03110
(855) 500-4372
www.iesc1.com

ION Electrical
3 Executive Park Dr
Bedford, NH 03110
(603) 513-2024

Irish Electric Corp.
659 Currier Rd
Hopkinton, NH 03229
(603) 224-7474
www.irishelectric.net

Jolt Electric & HVAC Svc LLC
PO Box 474
Hudson, NH 03051
(603) 402-1955
www.joltnh.com

Lawrence & Lober Electric, Inc.
15 Barker St
Bellows Falls, VT 05101
(802) 460-3479
www.llelectricservices.com

Liberty Electric Inc.
50-B Northwestern Dr # 1
Salem, NH 03079-5846
(603) 898-6023
www.libertyelectricnh.com

Longchamps Electric, LLC
PO Box 4328, 700 Harvey Rd
Manchester, NH 03108-4328
(603) 625-5954
www.LongchampsElectric.com

Martineau Electric, Inc.
165 Industrial Park Dr
Dover, NH 03820
(603) 742-0677
www.martineauelectric.com

MEC Electrical Contractors & Technologies
27 Industrial Avenue
Chelmsford, MA 01824
(978) 244-9301
www.themecteamb.com

Nappa Electrical Contractors
24 Cook Rd
BillERICA, MA 01821
(781) 273-6697
www.nappaelectric.com

Norman E. Day, Inc.
116 Perimeter Rd. # E
Nashua, NH 03063
(603) 880-4601
www.normaneday.com

NorthEast Electrical
36 Littleworth Rd
Dover, NH 03820
(781) 401-8500
www.needco.com

Oak Ridge Electrical
76 Oak Ridge Rd
Weare, NH 03281
(603) 660-4651
www.oakridgeelectrical.com

Peak Technical Solutions
14 Bittersweet Lane
Chester, NH 03036
(603) 582-1234
www.peaktechnicalsolutions.com

Piquette & Howard Electric Service, LLC
222 Plaistow Rd
Plaistow, NH 03865
(603) 382-3182
www.phelectric.net

Ray's Electric and General Contracting
33 Jericho Road
Berlin, NH 03570
(603) 752-1370
www.rayselctricnh.com

Richard Electric, Inc.
PO Box 999
Wildier, VT 05088
(802) 295-3894
www.richardelectric.com

TC Reilly Electric
67 Seaverns Bridge Rd
Amherst, NH 03031
(781) 858-8545
www.tcreillyelectric.com

The RELCO Companies
121 Lafayette Rd
North Hampton, NH 03862
(603) 964-7700
www.gorelco.com

Tocco Building Systems
29 Cook St, Ste A
BillERICA, MA 01821
(978) 663-0292
www.toccoorp.com

ENVIRONMENTAL & DEMOLITION

Alpine Environmental, Inc.
275 BillERICA Rd., Ste 2B
Chelmsford, MA 01824
(877) 527-4040
www.alpine-environmental.com

EnviroVantage, Inc.
629 Calef Highway
Epping, NH 03042
(603) 679-9682
www.envirovantage.com

GZA GeoEnvironmental, Inc.
5 Commerce Park North #201
Bedford, NH 03110-6984
(603) 623-3600
www.gza.com

RPF Environmental, Inc.
320 First NH Turnpike
Northwood, NH 03261
(603) 942-5432
www.airpf.com

FINISHES & SPECIALTY CONTRACTORS

3D Panels, Inc
750 Pierre Caisse Rd
Saint-Jean-Sur-Richelieu Quebec J3B 7Y5
(877) 731-7067

A.C. Hathorne/Melanson
252 Ave C, Griswold Industrial Park
Williston, VT 05495
(802) 862-6473
www.achathorne.com

All Weather Insulated Panels
1276 Crowe Rd
East Stroudsburg, PA 18301
(707) 260-9037
www.awipanel.com

Amtav Construction
9 Lockness Dr
Nashua, NH 03062
(978) 798-5768
www.Amtav-construction.com

Barrett Siding, Inc & Sheet Metal Bending
107 Willey Hill Rd
Londonderry, NH 03053
(603) 425-2856
www.barrettsiding.com

Blaktop, Inc.
PO Box 5243
West Lebanon, NH 03784
(603) 298-8885
www.blaktop.com

Builders Installed Products of NH, LLC
PO Box 5111
Manchester, NH 03108
(800) 626-7797

Chamberlain Companies, Inc
14 Delaware Dr
Salem, NH 03079
(603) 893-2606
www.chamberlaincompanies.com

Chevron Royal
245 Pepin Street
Sherbook, QC J1L2E2
(819) 823-2225
www.chevronroyal.com

Damon Insulation Co., Inc.
5 Tallwood Dr # C
Bow, NH 03304
(603) 224-7406
www.damoninsulation.com

Door Control, Inc.
8 Delta Dr # D
Londonderry, NH 03053-2349
(603) 216-9222
www.doorcontrolne.com

Evergreen Roofing, LLC
206 Hegeman Ave
Colchester, VT 05446
(802) 865-2264
www.evergreenroofingvt.com

Executive Building Systems, Inc.
25 Craftsman Lane
Merrimack, NH 03054
(603) 782-8930
www.executivebuildingsystems.us

Exterior Designs, LLC
184 Rockingham Rd
Londonderry, NH 03053
(603) 668-4113
www.exteriordesigns.com

F.A. Gray, LLC
300 West Rd. # 4
Portsmouth, NH 03801
(603) 436-0170
www.fagray.com

Fortin Building Systems, Inc.
82 Daniel Webster Highway
Merrimack, NH 03054
(603) 583-4653
www.fortinbuildingsystems.com

Gorman-Thomas, Inc.
60 Buckley Circle
Manchester, NH 03109
(603) 641-6055
www.gormanthomas.com

Granite State Glass
78 Douglas St
Manchester, NH 03102
(603) 528-4748
www.granitestateglass.com

GS Parcel
10 Lane Rd
Raymond, NH 03077
(866) 233-3597
www.gsparcels.com

Jasmor Properties LLC
PO Box 221
Concord, NH 03302
(603) 961-0335
jasmorprop.com

JDS Flooring Associates, LLC
5 Commerce Ave.
Londonderry, NH 03053
(603) 471-1821
www.floormh.com

Kaloutas
11 Rail Road Ave
Peabody, MA 01960-4311
(978) 532-1414
www.kaloutas.com

Kelley Brothers of New England
87 Holly Ct
Williston, VT 05495
(802) 865-5133
www.kelleybros.com

Keystone Carvings
1 Rebel Road, Unit 1
Hudson, NH 03051
(603) 598-2650
www.keystoncarvings.net

Konopka Floor Sanding
78 Regional Dr
Concord, NH 03301
(603) 435-6129
www.konopkafloorsanding.com

KTM Exteriors
10 Hazel Dr
Hampstead, NH 03841
(603) 895-0400
www.ktmexteriors.com

Lajeunesse Interiors, Inc
103 Plainfield Brook Rd
Barre, VT 05641
(802) 476-3173
www.lajinteriors.com

Legacy Building Systems, LLC
94 River Rd
Hudson, NH 03051-5241
(603) 883-7001
www.lbsystems.net

Merrimack Drywall, Inc./Merrimack Estimators, Inc.
24 Putney Rd
Dunbarton, NH 03046
(603) 774-1320
www.merrimackdrywall.com

Metro Walls, Inc.
160 BouchaRoad St
Manchester, NH 03103
(603) 668-2648
www.metrowalls.net

New Horizon Finishes
48 Beechwood Drive
North Andover, MA 01845
(781) 933-9301
www.newhorizonfinishes.com

Overhead Door Company
210 West Rd
Portsmouth, NH 03801
(603) 431-2474
www.overheaddoor-portland.com

Pella Windows & Doors New England
109 Airport Dr
Rochester, NH 03867
(603) 568-9194

Raynor Door Authority of New England, Inc.
444 E Industrial Park #1
Manchester, NH 03109
(603) 628-3667
www.raynordoorauthority.com

ReVision Energy
7 Commercial Dr
Brentwood, NH 03833
(603) 679-1777
www.revisionenergy.com

Skyline Roofing Services, LLC
861 Page St
Manchester, NH 03109
(603) 669-0131
www.skylineroofinginc.com

Steel Elements International, LLC
237 Daniel Webster Highway
Merrimack, NH 03054
(603) 466-2500
www.steelelements.com

Vast Glass
P.O. Box 159
North Salem, NH 03073
(603) 401-5918
www.vastglass.com

Vermont Frames
22 Varney Hill Road
Starksboro, VT 05487
(802) 453-3727
www.vermontframes.com

Viking Roofing
10 Clinton Dr
Hollis, NH 03049
(603) 883-6642
www.vikingroofingnh.com

FIRE SUPPRESSION & LIFE SAFETY

Encore Fire Protection
70 Bacon St
Pawtucket, RI 02860
(603) 563-7700
www.lifesafetyfire.com

Hampshire Fire Protection Co. LLC
8 North Wentworth Ave.
Londonderry, NH 03053
(603) 432-8221
www.hampshirefire.com

Interstate Fire Protection
25 Chenell Drive
Concord, NH 03301
(800) 649-9881
www.interstatefire.com

HVAC, MECHANICAL & PLUMBING

Accurate Air LLC
140 Bouchard St # 1
Manchester, NH 03103-3358
(603) 669-5159
www.accurateairinc.com

Al Terry Plumbing & Heating, Inc.
1776 Hooksett Rd.
Hooksett, NH 03106-1689
(603) 485-4205
www.alterryplumbing.com

Alliance Group, Inc
PO Box 666
Essex Junction, VT 05453
(802) 864-4000
www.agusa.com

ARC Mechanical Contractors
PO Box 724
Bradford, VT 05033
(802) 222-9255
www.arcmech.com

Bow Plumbing & Heating Corp.
3 Bow Bog Rd
Bow, NH 03304
(603) 225-6929
www.bowph.com

CRS Mechanical, LLC
119 Turnpike Rd, Unit 3G
Concord, NH 03301
(603) 333-2949
www.crsmechanicalnh.com

Denron Hall Plumbing & HVAC
605 Front St
Manchester, NH 03102
(603) 627-4186
www.denronhall.com

Dowling Corporation
363 Exeter Rd
Hampton, NH 03842
(603) 433-1311
www.dowlingcorp.com

Eastern Mechanical Contractors
724 E Industrial Park Unit 1
Manchester, NH 03109
(603) 518-8480
www.easternheatpump.com

Eastern Vent Systems LLC
4 Dick Tracy Dr
Pelham, NH 03076
(603) 595-8559
www.easternvent.com

Eckhardt & Johnson, LLC
6 Eastpoint Dr
Hooksett, NH 03106
(603) 622-7493
www.eckhardtjohnson.com

Elliott Controls, Inc.
10 Northern Blvd, #4
Amherst, NH 03031
(603) 883-7975
www.elliott-controls.com

Ferris Plumbing & HVAC
17 Old Nashua Road
Amherst, NH 03031
(603) 937-5069
www.ferrisplumbingheating.com

Granite State Plumbing & Heating, LLC
17 Oil Mill Rd
Weare, NH 03281
(603) 529-3322
www.gsphinc.com

Johnson & Jordan, Inc.
22 Gauthier Dr
Epsom, NH 03234
(603) 736-0175
www.johnsonandjordan.net

Laconia Refrigeration
11 Walker St
Laconia, NH 03246-2819
(603) 524-2937
www.laconiarefrigeration.com

New England Mechanical Overlay Inc.
100 Barnstead Rd
Pittsfield, NH 03263
(603) 435-9999
www.nemoinc.net

North Shore Mechanical Contractors, LLC
72 Jonspin Rd
Wilmington, MA 01887
(978) 774-9800
www.nsmech.com

Oliver Mechanical, Inc.
991 Candia Road Unit 1-3
Manchester, NH 03109-5209
(603) 621-9063
www.olivermechanicalinc.com

Palmer & Sicard, Inc.
89 Holland Way
Exeter, NH 03833
(603) 778-1841
www.palmerandsicard.com

Powers Guaranteed Services
PO Box 10005
Swanzey, NH 03446
(603) 352-9334
www.powersguaranteed.com

VHV Company
16 Tigan St #A
Winoski, VT 05404
(802) 655-8805
www.vhv.com

PROFESSIONAL RESOURCES

Wicked Cool Mechanical
1 Burton Dr, Ste 1, Unit 4
Meredith, NH 03253
(603) 524-0445
www.wickedcoolmech.com

LANDSCAPING, SITEWORK & UTILITY

AB Excavating, Inc.
653 Main St
Lancaster, NH 03584
(603) 481-0779
www.abexcavatinginc.com

BMP Consultants LLC
51 Granite Lane
Chester, NH 03036
(603) 608-9779
www.bmpconsultantsllc.com

E.A. Quinn Landscape Contracting LLC
240 Commerce St
Glastonbury, CT 06033
(860) 633-0115

Helical Drilling, Inc.
639 Granite St
Braintree, MA 02184
(781) 848-2110
www.helicadrilling.com

Jamco Excavators, LLC
84 Exeter Rd
South Hampton, NH 03827
(603) 394-7664
www.jamcoexcavators.com

Kenyon Lawn & Property Maintenance
40 South River Rd, Ste 35
Bedford, NH 03110
(603) 391-5819
www.kenyonlawn.com

Leighton A. White, Inc.
138 Elm St
Milford, NH 03055
(603) 673-2294
www.leightonawhite.com

New Era Excavation
13 Sheridan Dr
Londonderry, NH 03053
(603) 231-1164
www.neenh.com

North Point Outdoors
PO Box 925
Derry, NH 03038
(603) 289-8000
www.northpointoutdoors.com

Outdoor Pride Landscaping
500 Harvey Road, Ste 205
Manchester, NH 03103
(603) 625-9738
www.outdoorpride.com

R & B Services
71 Brook Rd
Sanbornton, NH 03269
(603) 235-8254
www.rbservicesnh.com

St. Pierre, Inc.
59 Jeffrey Rd
Charlestown, NH 03603
(603) 826-4121
www.stpierreincsandandgravel.com

PAINTING

Caprioli Painting, Inc.
20 Beech St Extension # 3
Newmarket, NH 03857
(603) 659-2788
www.capriolipainting.com

CE Painting, LLC
220 Forbes Road Ste 108
Braintree, MA 02184
(781) 849-3030
www.cepaint.com

John K's Professional Painters
55 Nelson Street, 2nd Floor
Manchester, NH 03103
(603) 867-0755
www.johnkpainting.com

Keeley Painting Co., Inc.
256 True Rd
Pittsfield, NH 03263-3516
(603) 435-7234
www.keeleypainting.com

Marchand Painting, Inc.
1200 Elm St, Unit 214
Manchester, NH 03101
(603) 472-9235
www.marchandpaintinginc.com

Noonan Brothers Painting, LLC
140 Bouchatd St. # 1B
Manchester, NH 03103
(603) 621-9422
www.noonanbrotherspainting.com

Sherwin Williams
161 Abby Rd
Manchester, NH 03103
(603) 626-6999
www.sherwin-williams.com

White Diamond Painting, LLC
PO Box 594
Barrington, NH 03825
(603) 905-9660
www.whitediamondpainting.com

STEEL, STEEL ERECTION & WELDING

American Steel & Precast Erectors
590 Hancock Rd
Peterborough, NH 03458
(603) 547-6311
www.aspe-nh.com

Capone Iron Corporation
20 Turcotte Memorial Dr
Rowley, MA 01969
(978) 948-8000
www.caponeiron.com

Cohen Steel Supply Inc.
10 Basin St
Concord, NH 03301
(603) 225-2047
www.cohensteel.com

Multi-Weld Services, Inc.
153 Riverside Dr
Contoocook, NH 03229
(603) 746-4604
www.multi-weld.com

Novel Iron Works, Inc.
PO Box 221
Greenland, NH 03840-2444
(603) 436-7950
www.noveliron.com

Rose Steel Inc.
P.O. Box 221
Greenland, NH 03840
(603) 436-7950
www.rosesteelinc.com

SL Chasse Steel
8 Christine Dr
Hudson, NH 03051
(603) 886-3436
www.slchassesteelfab.com

SSW Erectors, LLC
54 VFW Dr
Hyde Park, VT 05655
(802) 888-2422
www.sswerectors.com

Superior Sheet Metal
14 Flagstone Dr
Hudson, NH 03051
(603) 577-8620
www.superiorism.com

SUPPLIERS & RENTALS

B.K. Systems, Inc.
27 Sheep Davis Rd
Pembroke, NH 03275-3705
(603) 647-8775
www.bkssystemsinc.com

Bode Equipment Company
33 Londonderry Rd
Londonderry, NH 03053-3314
(603) 537-0900
www.bodeequipment.com

Brand Salfway Solutions Services, LLC
825 Route 3A
Bow, NH 03304
(603) 410-2250
www.nescanfold.com

Caterpillar, Inc.
1325 K Street NW
Washington, DC 20005
www.caterpillar.com

Dewalt
701 E. Joppa Rd
Towson, MD 21286
(410) 716-3900
www.sbdinc.com

E. J. Prescott
210 Sheep Davis Road
Concord, NH 03253
(603) 224-9545
www.ejprescott.com

East Coast Lumber & Building Supply
Company, LLC
PO Box 530
East Hampstead, NH 03826
(603) 329-5322
www.eastcoastlumber.net

Eastern Propane & Oil
PO Box 1800
Rochester, NH 03866-1800
(603) 332-2080
www.eastern.com

Granite Group, The
6 Storrs St
Concord, NH 03301
(603) 545-3470
www.thegranitigroup.com

Hews Company
190 Rumery St
South Portland, ME 04106
(207) 767-2136
www.hewscsco.com

Johnson Hardware & Rental
1442 VT Route 15W
Johnson, VT 05656
(802) 635-7282
www.jhrtv.com

L & W Supply
527 Mammoth Rd
Londonderry, NH 03053
(603) 424-7001
www.lwsupply.com

LaValley Building Supply, Inc.
PO Box 267
Newport, NH 03773
(800) 528-2553
www.lavalleys.com

LG Electronics USA, Inc.
Bedford, NH
(603) 769-0892
www.lge.com/us

Milton Rents
509 Main St
Gorham, NH 03581
(603) 752-5588
www.miltonrents.com

Milwaukee Tool
13135 West Lisbon Rd
Brookfield, WI 53005
(262) 402-7226
www.milwaukeekeetool.com

Mitsubishi Electric Trane HVAC US
150 Cordaville Rd
Southborough, MA 01772
(603) 472-5549
www.metahvac.com

NEFCO, Inc.
411 Burnham St
East Hartford, CT 06108
(800) 969-0285
www.gonefc.com

New England Barricade, Sign and Safety, LLC
68 Fogg Rd, Unit C
Epping, NH 03042
(603) 659-2182
www.newenglandbarricade.com

Page Street Leasing, LLC
PO Box 129
Candia, NH 03034
(603) 622-1673
www.pagest.com

Patriot Building Systems, LLC
184 Rockingham Rd
Londonderry, NH 03053
(603) 660-4357
www.patriotbuildingsystems.com

Ponemah Contractor Supply
5 Tech Circle
Amherst, NH 03031
(603) 930-3584
www.ponemahcs.com

Ready Rents
25 Daniel Webster Highway
Meredith, NH 03253
(603) 279-7323
www.readyreq.com

Sales Solutions Inc.
321 Cumberland Valley Place
Martinsburg, WV 25401
(888) 261-2566
www.salesolutionsinc.net

Signarama of Concord
249 Sheep Davis Rd
Concord, NH 03301
(603) 225-4081
www.signarama-concord.com

Sunbelt Rentals, Inc.
404 Industrial Lane
Barre, VT 05641
(802) 830-8844

Triumph Modular
194 Ayer Rd
Littleton, MA 01460
(207) 351-5222
www.triumphmodular.com

United Rentals, Inc.
2 Sutton Circle
Hooksett, NH 03106-2039
(603) 622-1555
www.unitedrentals.com

United Site Services
118 Flanders Rd
Westborough, MA 01581
www.unitedsiteservices.com

Waste Innovations
100 Arboretum Dr
Portsmouth, NH 03801
(888) 568-7274

White Cap
6 Ethan Allen Dr, Ste 1
South Burlington, VT 05403
(603) 263-7337
www.whitecap.com

WILLSCOT
48 Dick Tracy Dr
Pelham, NH 03076
(603) 882-2823
www.willscot.com

ASSOCIATES

Applied Solutions Consulting
32 Audrey Lane
Westford, VT 05494
(802) 881-3439
www.ascilvt.com

Automated Logic
8 Timberwood Drive
Goffstown, NH 03045
(603) 325-8311
www.automatedlogic.com

BerryDunn
PO Box 1100
Portland, ME 04104-1100
(207) 541-2281
www.berrydunn.com

CASELLA Waste Systems, Inc.
53 Pelham Rd
Salem, NH 03079
(800) 445-1318

CGI Business Solutions
5 Dartmouth Ave, Ste 101
Auburn, NH 03032
(603) 622-4600
www.cgibusinesssolutions.com

Chasse Crane Services, LLC
8 Christine Dr
Hudson, NH 03051
(603) 821-5465
www.slchassesteelfab.com

Contractors Risk Management, Inc.
46 S. Main St Unit 1
Concord, NH 03301
(603) 225-3335
www.crmusa.com

ConvenientMD Urgent Care
360 Route 1 Bypass NB, Ste 2
Portsmouth, NH 03801
www.convenientmd.com

Diesl, Inc.
379 S 1st Street
Brooklyn, NH 11211
www.diesl.ai

Document Crunch
3000 Summit Place
Alpharetta, GA 30009
(888) 768-7654
www.documentcrunch.com

Elm Grove Companies
200 Technology Dr
Hooksett, NH 03106
(603) 666-8534
www.elmgrovecompanies.com

Enterprise Fleet Management
10 2nd Ave
Burlington, MA 01803-4408
(508) 530-1199
www.efleets.com

Fully Promoted of Southern NH
410 S River Road, Suite 6
Bedford, NH 03110
(603) 647-9994
www.fullypromotedsnh.com

Grappone Automotive
PO Box 1200
Concord, NH 03302
(603) 226-8016
www.grappone.com

Hettrick, Cyr & Associates
59 Sycamore Street
Glastonbury, CT 06033
(860) 209-6090
www.hettrickcyr.com

Killington Pico Ski Resort Partners
4763 Killington Road
Killington, VT 05751
(802) 411-6884
www.killington.com

Lawson Group, The
PO Box 3304
Concord, NH 03302
(603) 228-3610
www.thelawsonsgroup.com

Mercedes-Benz of Burlington
80 Cambridge St Rte 3a
Burlington, MA 01803
(781) 358-8324
www.mbob.com

New Hampshire Housing Finance Authority
PO Box 5087
Manchester, NH 03108
(603) 472-8623
www.nhffa.org

NH Business Review
250 Commercial St, Ste 4104
Manchester, NH 03101-1227
(603) 624-1442

NHSaves
KSV Agency
212 Battery Street, Suite 2
Burlington, VT 05401
www.nhsaves.com/contractors

Oar Scanning
PO Box 607
Newport, NH 03773
(603) 327-5343
www.oarscanning.com

Petrocelli Marketing Group
125 Daniel Webster Highway #2
Merrimack, NH 03054
(603) 860-4623
www.petrocellimkt.com

Surveying & Mapping, LLC
102 Kent Place
Newmarket, NH 03857
(603) 659-6560
www.doucetsurvey.com

Trident Project Advisors and Development Group
155 N Broadway/PO Box 68
Salem, NH 03079
(603) 898-6110
www.tridentgrp.com

Upright Images, LLC
7 Huron Drive
Nashua, NH 03063
(603) 459-4035
www.uprightimages.com

W. D. Matthews Machinery Company
309 Sheep Davis Rd
Concord, NH 03301
(603) 225-1171
www.wdmatthews.com

EDUCATION & TRAINING

Crestcom - New Hampshire
12 Bittersweet Lane
Atkinson, NH 03811
(603) 404-3463

Dale Carnegie
Portsmouth, NH 03801
(781) 203-5799

FocalPoint Business Performance
41 Sheldon Rd
Danbury, NH 03230
(813) 469-0012

Frank Nappo EOS Implementer
93 Middle St
Portsmouth, NH 03801
(603) 231-7208
www.franknappo.com

UVM Professional & Continuing Education (PACE)
23 Mansfield Avenue
Burlington, VT 05405
(802) 656-2085
www.learn.uvm.edu

YGM Consulting
1970 Elm Street
Manchester, NH 03104
(603) 567-4069
www.ygmconsulting.org

ENGINEERING/ARCHITECTURE

Fitzmeyer & Tocci, CM, LLC
300 Unicorn Park Drive
Woburn, MA 01801
(781) 481-0210
www.f-t.com

Nobis Group
18 Chenell Dr
Concord, NH 03301
(603) 224-4182
www.nobis-group.com

S. W. Cole Engineering, Inc
10 Centre Rd
Somersworth, NH 03878
(207) 848-5714
www.swcole.com

Team Engineering
82 Palomino Lane Ste 503
Bedford, NH 03110
(603) 497-3137
www.myteamengineering.com

Terracon
77 Sundial Ave, # 401W
Manchester, NH 03103
(603) 647-9700
www.terracon.com

Turner Group, Inc.
27 Locke Rd
Concord, NH 03301
(603) 228-1122
www.hiturner.com

Warrenstreet Architects, Inc.
4 Crescent St, Unit 2
Concord, NH 03301
(603) 225-0640
www.warrenstreet.coop

FINANCE/BANKING

Bangor Savings Bank
24 Hamlin Way
Bangor, ME 04402-0930
(207) 974-2515
www.bangor.com

BankProv
115 South River Rd
Bedford, NH 03110
(603) 488-6447
www.bankprov.com

Cents and Balance, LLC
P.O. Box 3916
Concord, NH 03302
(603) 491-3284
www.centsandbalance.com

Community Bank
650 Elm St
Manchester, NH 03101
(603) 860-3231
www.cbna.com

Eastern Bank
100 Arboretum Dr Ste 204
Portsmouth, NH 03801
(800) 333-8000
www.easternbank.com

Edward Jones - Laconia
55 Canal St
Laconia, NH 03246
(603) 524-4533
www.edwardjones.com/us-en/financial-advisor/benjamin-wilson

E.J. Callahan & Associates, LLC
50 Nashua Rd, Unit 209B
Londonderry, NH 03053
(781) 587-3779
www.ejccpa.com

Granite Financial Partners
388 Nashua St
Milford, NH 03055
(603) 554-8551
www.gfnpn.com

Marcum, LLP
9 Executive Park Dr, Ste 100
Merrimack, NH 03054
(603) 882-1111
www.melansoncpas.com

Nathan Wechsler & Co., CPA
70 Commercial St #401
Concord, NH 03301-5031
(603) 224-5357
www.nathanwechsler.com

Service Credit Union
3003 Lafayette Rd
Portsmouth, NH 03801
(603) 422-8439
www.servicecu.org

INSURANCE

BC NH Group Trust
12 Gill St, Ste 5500
Woburn, MA 01801
(855) 874-0123
www.usi.biz

Alliant Insurance Services
125 High St, Ste 2205
Boston, MA 02110
617-535-7200
WWW.alliant.com

Clark Insurance
One Sundial Ave, Ste 302N
Manchester, NH 03103
(207) 956-2009
WWW.clarkinsurance.com

Cross Insurance Agency
1100 Elm St
Manchester, NH 03101
(603) 263-8684
www.crossagency.com

Frankenmuth Surety
701 US Rte 1 Ste 1
Yarmouth, ME 04096
(704) 421-7012
www.frankenmuthsurety.com

Gallagher
45 Constitution Ave
Concord, NH 03302
(603) 224-2562
www.ajg.com

HUB International
2 Railroad Street
Essex Junction, VT 05452
(802) 876-1322
www.hubinternational.com

The Davis Agency
P.O. Box 2516
Concord, NH 03302
(603) 496-8850
www.thedavisagency.com

Travelers
Two Financial Ctr. # 900 - 60 South St.
Boston, MA 02111
(207) 857-2000
www.travelers.com

USI
3 Executive Park Dr. # 300
Bedford, NH 03110-6990
(603) 665-6149
www.usi.biz

LEGAL

Albin, Randall & Bennett
PO Box 445
Portland, ME 04112-0445
(207) 772-1981
www.arbcpa.com

Bernstein, Shur, Sawyer & Nelson
670 North Commercial St # 108
Manchester, NH 03101
(603) 665-8829
WWW.bernsteinshur.com

Devine, Millimet & Branch PA
111 Amherst St
Manchester, NH 03101
(603) 669-1000
www.devinemillimet.com

Gagliuso Legal Solutions, PLLC
P.O. Box 353
Amherst, NH 03031
(603) 345-6619
www.gagliusolegal.com

Hinckley Allen
650 Elm St # 500
Manchester, NH 03101-2551
(603) 225-4334
www.hinckleyallen.com

Preti Flaherty
PO Box 1318
Concord, NH 03301
(603) 410-1500
www.preti.com

Robinson & Cole, LLP
1 Boston Place
Boston, MA 02108
(617) 557-5948
www.rc.com

Stoneman, Chandler & Miller, LLP
99 High St #1610
Boston, MA 02110
(617) 542-6789
www.scmllp.com

Strang, Scott & Giroux, LLP
228 Main St
New London, NH 03257
(603) 526-2120
www.strangscott.com

STAFFING

Resource Options, Inc.
1 Verani Way # 1C
Londonderry, NH 03053
(603) 552-9951
www.resourceoptions.com

Skilled Trades Partners, Inc.
201 Boston Post Road W
Marlborough, MA 01752-4667
(603) 237-1880
www.skilledtradespartners.com

Tradesmen International
169 South River Road
Bedford, NH 03110
(603) 890-3233
www.tradesmeninternational.com

TradeSource, Inc
190 Londonderry Turnpike, Unit A
Manchester, NH 03104
(603) 425-0070
www.tradesource.com



Jennifer L. Landon, M.Ed.
ygmconsulting.org
603-657-4069

Your Total Human Health Solutions

The strength of our industry must include the strength of our people — body, heart, mind, and soul. We help construction companies create cultures that value psychological health and safety through:

- Leadership Development / DISC Behavioral Analysis
- Grief Support & Education Programs
- Suicide Prevention & Postvention
- Mental Health Awareness
- Recovery Friendly Workplace Advocacy

Excellence Award

Industrial/Manufacturing Over \$20M

NorthPoint Construction Management, LLC.
Locus Robotics



NorthPoint Construction Management delivered a state-of-the-art global headquarters for **Locus Robotics** in Wilmington, Massachusetts—a 158,500-square-foot facility that brings together research and development, engineering, assembly, quality control, shipping, and client support under one roof. What began as a warehouse design evolved midstream into a world-class corporate headquarters and manufacturing center. The pivot required new cladding systems, 120+ window openings, expanded curtainwall, and a 38,500-square-foot mezzanine—all designed and installed without delaying construction. NorthPoint managed complex site logistics within a busy business park, while also upgrading utilities to serve the entire campus. Environmental abatement, demolition of two office buildings, and new infrastructure were completed safely and efficiently. Over 76,000 man-hours were logged with zero lost-time incidents.

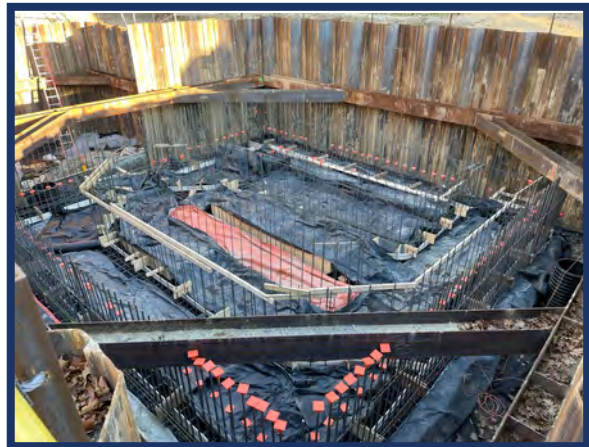
Delivered in just 21 months from concept to completion, the facility now anchors Fordham Park as a hub of advanced manufacturing—an achievement that reflects NorthPoint's design-build expertise, collaborative spirit, and commitment to safety.



Merit Award

Industrial/Manufacturing Over \$20M

Methuen Construction Co., Inc. Merrimack Wastewater Treatment Facility Upgrades



Methuen Construction led a transformative upgrade to the Town of **Merrimack's Wastewater Treatment Facility**, ensuring resilient, efficient infrastructure to serve the community for decades to come. Innovation was central. A detailed BIM model resolved trade clashes before work began, reducing costs and delays, while CAD-based as-builts captured underground utilities with precision. A sophisticated CPM schedule and phased approach safeguarded critical operations and countered pandemic-related supply chain challenges. Value engineering played a key role, aligning scope with funding while still extending the plant's service life, maximizing energy efficiency, and modernizing employee spaces. Temporary labs and offices allowed uninterrupted EPA-required testing during renovations, with seamless weekend transitions and off-hour relocations. Challenges included unsuitable subsurface conditions, rehabilitation of the Souhegan Pump Station without interruption, and a near doubling of the project's scope midstream. Methuen responded with aggregate piers, bypass pumping, and resequenced schedules—delivering on time and within budget. The result: a modernized, energy-efficient wastewater treatment system built with innovation, adaptability, and a 30-year extension of service life.

Excellence Award

Industrial/Manufacturing Under \$20M

Methuen Construction Co., Inc. **Primary Clarifier Concrete Restoration**



Methuen Construction delivered a forward-thinking restoration of seven massive primary clarifiers at the South Essex Sewerage District—each designed for flows exceeding 100 million gallons per day. Innovation was central. Crews used ultra-high-pressure water blasting to remove deteriorated concrete without harming embedded reinforcement, then applied micro-silica modified concrete and an epoxy-silane barrier for long-term durability. Augmented-reality overlays, digital inspections, and predictive maintenance analytics guided every step, ensuring accuracy and quality. The project faced major challenges. Roof infiltration halted interior work for nearly a year, solved through installation of new liners, drainage, and moisture sensors. Emergency leaks in 60- and 66-inch pipelines required trenchless CIPP lining and structural patching—all completed while maintaining treatment flows. When a critical pipe failure threatened operations, Methuen led a design-build collaboration with AECOM, Insituform, and SESD to restore four pipelines in just six months.

Completed safely with zero incidents, the clarifier restoration not only extended the life of critical infrastructure but set new benchmarks for innovation, collaboration, and resilience in wastewater treatment.



Excellence Award

Residential Over \$1 Million

North Branch Construction Roberts Cove Retreat



On the shores of Lake Winnepesaukee, the 10,000-square-foot **Roberts Cove Retreat** represents the pinnacle of high-end residential construction. Built on land once home to Camp DeWitt, the project honors its history while integrating modern technology, sustainability, and craftsmanship. North Branch Construction was entrusted with this home just steps from a residence the company built for the Owner's parents in 1993—making it a meaningful continuation of the family's legacy. The work demanded international sourcing of custom materials, sensitive waterfront permitting, and close coordination with a remotely located Owner. With in-person visits only every other month, design reviews became critical deadlines, requiring careful pre-staging of selections, samples, and approvals. Even finishes like wallpaper and custom wainscoting required field redesigns and seamless collaboration among crews, designers, and the Owner. Mechanical innovations—advanced systems for climate control, energy efficiency, and sustainability—were integrated discreetly into the design, ensuring comfort without compromising aesthetics.

Through collaboration, precision, and innovation, North Branch delivered **Roberts Cove Retreat** as both a home and a legacy—built with craftsmanship, technology, and pride.



Merit Award

Commercial Over \$10 Million

Callahan Construction 75 Canal



In Manchester's Gaslight District, **75 Canal** transforms a once-forgotten block into a vibrant mixed-use landmark that honors the city's past while building its future. Preconstruction planning set the tone: the team designed a sloped garage to reduce soil removal, hid piping above ceilings to address community concerns, and worked closely with city departments to keep neighbors safe and informed. Inside and out, history is preserved and repurposed. A recovered "The Verick" sign anchors the lobby, while salvaged beams reappear as warm wood details. River-facing windows fill homes with daylight, and interiors nod to Manchester's textile-mill heritage with a refined modern palette.

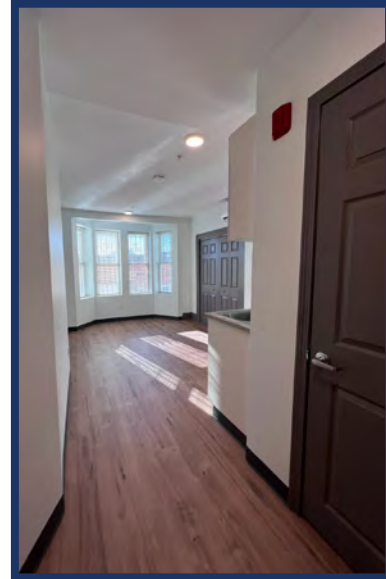
Today, **75 Canal** delivers 250 residences across 332,400 square feet with ground-floor retail and extensive amenities—parking, fitness, co-working, pet spa, bike racks, courtyards, and a roof deck—already drawing strong interest. A true community catalyst, **75 Canal** is the result of collaboration by Callahan Construction, Market Square Architects, and Jones Street—an achievement worthy of recognition.



Excellence Award

Historical Restoration/Renovation

Charters Brothers Construction Community Teamwork Summer Street Shelter



In Lowell, Massachusetts, Charters Brothers Construction partnered with Community Teamwork, Inc. to restore and transform a neglected 19th-century building into 19 units of supportive housing for families and individuals transitioning out of homelessness. The historic structure had endured years of vacancy, water damage, and fire. Crews rebuilt deteriorated framing, reinforced roof systems, and carefully integrated new mechanical, electrical, and fire protection systems into the old framework—all while preserving original details like window openings and cornices. Uneven floor elevations demanded precise leveling and creative pathways for modern utilities, fire-rated assemblies, and accessibility. On a tight urban site with unsuitable soils and ledge, the team adapted civil designs, coordinated utilities, and maximized every square foot. Through close collaboration with CTI, city officials, and inspectors, budget stewardship and value engineering kept the project feasible without compromising quality.

Completed in early 2024, 275-277 **Summer Street** now provides safe, modern homes while preserving a piece of Lowell's history—a mission-driven effort that proves construction can build both community and hope.



Excellence Award

Specialty Construction - Commercial Over \$1M

Metro Walls The Baldwin



Metro Walls played a central role in the construction of **The Baldwin**, a five-building senior living community totaling 470,000 square feet. The project's accelerated schedule demanded precise logistics, with multiple buildings active at once and no margin for error. To keep pace, Metro Walls deployed overlapping crews across exterior and interior phases. As one building neared completion, teams shifted to the next—framing, drywall, insulation, and detailed finishes that set a luxury standard. Highlights included custom soffits, decorative panels, and intricate acoustical features, from Top Akustik wood walls to micro-perforated ceilings imported from Switzerland. Innovation supported productivity. A specialized corner board machine allowed the team to execute ultra-thin soffit profiles with sharp precision, saving time while delivering flawless results. Metro Walls also carefully coordinated around supply chain delays, pre-ordering overseas materials months in advance to keep the schedule on track.

Through communication, adaptability, and craftsmanship, Metro Walls delivered **The Baldwin** on time, meeting exacting standards and creating a refined community for its residents



2025 Excellence in Construction

Excellence Award

Industrial/Manufacturing over \$20M

Fulcrum Associates

C/A Design Wakefield Thermal Expansion



In Exeter, New Hampshire, Fulcrum Associates transformed a long-vacant Osram Sylvania facility into **C/A Design/Wakefield Thermal's** new 108,000-square-foot corporate headquarters and advanced manufacturing hub. Consolidating two operations under one roof, the project was designed for today's efficiency and tomorrow's growth. Early challenges included unsuitable soils and ledge that required mass excavation, alongside the installation of a 400,000-gallon underground stormwater system. Fulcrum adapted quickly, restoring site circulation to keep construction moving forward. A 40,000-square-foot addition expanded capacity, with upgraded electrical and HVAC systems, thickened concrete slabs to support heavy machinery, and an open layout for operational flexibility. Inside, structural reinforcements and modern architectural finishes created a bright, functional environment, blending offices and production space. Advanced systems—from chilled water loops and ethernet infrastructure to emergency communications—were integrated seamlessly.

Working closely with AHP Architects, TF Moran, and C/A Design/Wakefield Thermal, Fulcrum coordinated complex equipment installations and owner-led epoxy flooring with precision. Completed with zero lost-time incidents, the **C/A Design/Wakefield Thermal Expansion** stands as a model of adaptive reuse and collaboration, delivering a world-class aerospace manufacturing facility for the future.

Merit Award

Mechanical - Industrial

North Shore Mechanical Contractors Walmart Symbotics



In Raymond, New Hampshire, NSMC partnered with Caddell Construction to help deliver one of Walmart's most advanced distribution centers—a facility redesigned for high-speed e-commerce fulfillment with end-to-end AI and robotics. NSMC's role focused on the mechanical backbone of this innovation. Crews installed high-pressure compressed air piping, industrial-grade compressors, and custom HVAC systems—including infrared dock heaters—to ensure stable conditions for sensitive automation. Every system was delivered with tight tolerances to meet the demands of synchronized warehouse robotics. The challenges were significant. Construction unfolded in a 24/7 live facility, requiring overnight shifts, pull-planning strategies, and constant coordination around active drivers and staff. Holiday blackout periods demanded precise sequencing to avoid disrupting operations.

Through lean practices, BIM modeling, and rigorous safety protocols, NSMC kept the project on track with zero lost-time incidents. The **Walmart Symbotic** APD facility now stands as a model of collaboration, safety, and innovation—driving the future of retail logistics.



TURNER GROUP NAMES TWO NEW SENIOR ASSOCIATES

Concord, NH – December 15, 2025 –

Turner Group is proud to announce the promotion of Jonathan George, PE and Dan Hall, AIA, NCARB to Senior Associate roles at the firm.

Senior Structural Engineer Jonathan George, PE plays a key leadership role within Turner Group's structural team. With over 11 years at the company, Jon's collaborative approach and focus on building strong client relationships ensure seamless project execution and high-quality deliverables.



Turner Group Senior Structural Engineer Jonathan George, PE promoted to Senior Associate

Senior Project Architect Dan Hall, AIA, NCARB, brings over 23 years of design experience to Turner Group, spanning commercial, office, residential, and mixed-use projects. From conceptual design through construction administration, Dan delivers functional and creative solutions that have enabled the firm to excel in diverse markets, from educational facilities to cutting-edge cleanrooms.



Turner Group Senior Project Architect Dan Hall, AIA, NCARB promoted to Senior Associate

"Jon and Dan exemplify the dedication and integrity that move our company forward," said Bill Hickey, President. "Their promotions are not only a recognition of their individual

excellence, but also a celebration of the culture of teamwork and shared ownership that defines Turner Group."

As the firm continues to evolve its leadership structure, Turner Group remains committed to empowering staff at all levels and reinforcing a deep sense of purpose and accountability that is reflected in every project.

About Turner Group

Turner Group is a trusted leader in full-service architecture and engineering dedicated to delivering practical, creative solutions for schools, municipalities, higher education, and commercial clients. With a focus on collaboration, technical excellence, and client success, Turner Group builds projects that are efficient, reliable, and designed to last.

MERIDIAN CONSTRUCTION PROMOTES KYLE T. LONG TO VICE PRESIDENT

Gilford, NH – November 19, 2025 –

Meridian Construction is proud to announce the promotion of **Kyle T. Long** to the position of **Vice President**. This advancement marks a significant milestone not only in Kyle's career but also in the strategic growth of the company, which has built a reputation for excellence in high-end residential and select commercial construction throughout New Hampshire.



Kyle T. Long

ARCHITECTURAL METAL PANEL EXTERIOR SIDING FABRICATOR

ALUMINUM



INCOMBUSTIBLE



WELDABLE



ROBUST

ALUMINUM COMPOSITE (ACM)



NFPA 285
AAMA 508
AAMA 509



MALLEABLE
SHAPEABLE



SHORT
LEAD TIME



PERFORATION

SHAPES

SUNSHADE & BATTEN

SCREEN WALL

CURVED

SPECIAL ASSEMBLY & FINISHES

www.3dpanelsinc.com T 1-877-731-7067 @ info@panneaux3d.com



Welcome New Members

September, 2025 through November, 2025

Automated Logic

8 Timberwood Drive
Goffstown, NH 03045
603-325-8311
automatedlogic.com

C.E. Floyd Company, PBC

200 Baker Avenue, Suite 205
Concord, MA 01742
781-271-9006
cefloyd.com

Chevron Royal

245 Pepin Street
Sherbrooke, QC J1L2E2
819-823-2225
chevronroyal.com

Document Crunch

3000 Summit Place
Alpharetta, GA 30009
888-768-7654
documentcrunch.com

E.J. Callahan & Associates, LLC

50 Nashua Road, Unit 209B
Londonderry, NH 03053
781-587-3779
ejccpa.com

Fitzemeyer & Tocci CM LLC

300 Unicorn Park Drive
Woburn, MA 01801
781-481-0210
f-t.com

Fully Promoted of Southern NH

410 S River Road, Suite 6
Bedford, NH 03110
603-647-9994
fullypromotedsnh.com

HUB International New England

2 Railroad Street
Essex Junction, VT 05452
802-876-1322
hubinternational.com

Keystone Carvings

1 Rebel Road, Unit 1
Hudson, NH 03051
603-598-2650
keystonecarvings.net

Killington Pico Ski Resort Partners, LLC

4763 Killington Road
Killington, VT 05751
802-422-6884
killington.com

New Horizon Finishes

48 Beechwood Drive
North Andover, MA 01845
781-933-9301
newhorizonfinishes.com

Outdoor Pride Landscaping

500 Harvey Road, Suite 205
Manchester, NH 03103
603-625-9738
outdoorpride.com

**UVM Professional & Continuing Education
(PACE)**

23 Mansfield Avenue
Burlington, VT 05405
802-656-2085
learn.uvm.edu

Vermont Frames

22 Varney Hill Road
Starksboro, VT 05487
802-453-3727
vermontframes.com



**APPLIED
SOLUTIONS
CONSULTING**

**Workplace Safety Training &
OSHA Compliance Consulting**

CONTACT US

 katie@ascllcv.com

 www.ascllcv.com

 802-881-3439




Advertiser Index

3D Panels.....	39
ABC Technology In Construction ..	13
Applied Solutions Consulting	41
EnviroVantage.....	inside front cover
Gallagher.....	back cover
Optiline Enterprises .	Inside back cover
Pynn Masonry	4
YGM Consulting	29

The power to get you noticed.

ADVERTISE WITH US! Contact Lisha Nelson at: lisha@abcnhvt.org



CONSTRUCTION RESOURCE

September, 2025 through November, 2025

Celebrate Our Members

40 years or more

Palmer & Sicard, Inc.

30 years or more

Longchamps Electric, LLC
Mas-Con Corporation
Ewing Electrical Co., Inc.

20 years or more

SL Chasse Steel
TradeSource, Inc.
Keeley Painting Co., Inc.
EnviroVantage, Inc.
Interstate Electrical Services Corp.
Superior Sheet Metal
Granite State Plumbing & Heating
LaValley Building Supply, Inc.
United Rentals, Inc.
Richard Electric, Inc.



10 years or more

Consolidated Electrical Distributors, Inc.
RPF Environmental, Inc.
Terracon
Powers Generator Service LLC
Charters Brothers Construction, LLC
Blaktop, Inc.
VR Concrete, LLC.
North & South Construction Services
Daniels Electric Corporation
Eckman Construction Co., Inc.
F.A. Gray, LLC
White Diamond Painting, LLC
Lawrence & Lober Electric, Inc.
Gorman-Thomas, Inc.
Alpine Environmental, Inc.
H.P. Cummings Construction Company
Jasmor Properties LLC
Johnson & Jordan, Inc.
CGI Business Solutions
Executive Building Systems, Inc.
Team Engineering

5 years or more

New England Mechanical
Overlay Inc.
Riess Construction LLC
W.M. Schultz Construction
Granite State Glass
Encore Fire Protection
Bangor Savings Bank
JDS Flooring Associates, LLC
Graybar Electric Co., Inc.
Frankenmuth Surety
CE Painting, LLC

OPTILINETM ENTERPRISES

THE VERY BEST
IN DRYWALL &
METAL FRAMING



Specializing in high-volume commercial and residential building and retail exteriors, Optiline prioritizes quality work and top-notch service, treating everyone like family.



BREAK GROUND AT
OPTILINE.COM

The Rowley Agency is now Gallagher.

Same local commitment. New global strength.



At The Rowley Agency, we're proud to be part of Gallagher, a global insurance brokerage who shares our core values and a deep commitment to its employees, clients, and community. With our combined experience, we remain committed to helping your business and our community face the future with confidence.

Contact us: (603) 224 2562 | AJG.com